

echo for SharePoint 2007 – Deploy, Update, and Test

Migration is a roadblock to moving forward with your SharePoint strategy. Your team is sold on moving to the SharePoint 2007 platform, but a move means cleaning up content, sites, and folders, weeding through a maze of web part and workflow customizations and third party tools, and a variety of design, security, and taxonomy considerations. In short, there is nothing out-of-the-box about your SharePoint deployment. The truth is, migrations are phased, iterative, error prone, and not your ultimate goal:

Migrations are phased. How and what you migrate should not be determined by the technology you use – it's about matching the needs and timing of your content owners and teams. A migration should be flexible, helping you to move sites and content organically based on those end user needs, not the limitations of the technology.

Migrations are iterative. Your planning should not be limited by the number of migration attempts you make, or by the volume of content being moved. A healthy migration recognizes the need to test the waters, to move sites, content and customizations in waves, allowing users to test and provide feedback.

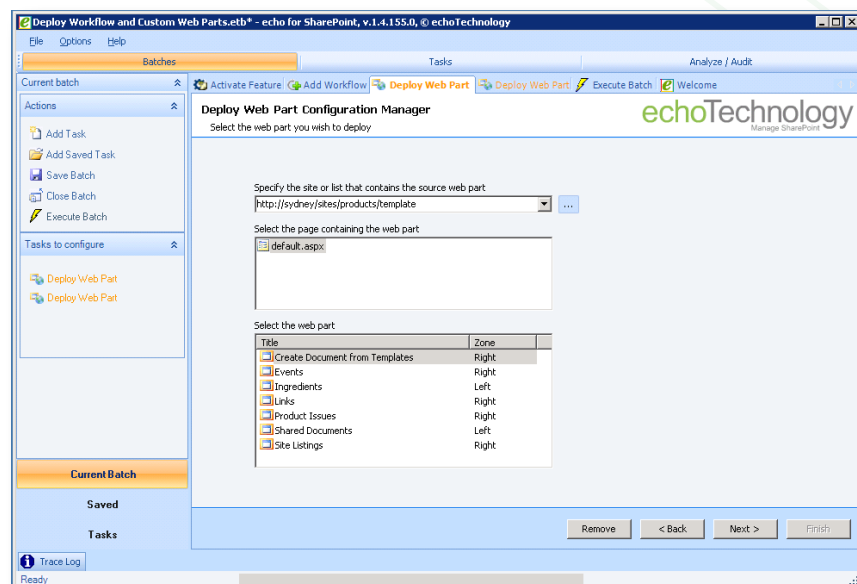
Migrations are error prone. Drag-and-drop SharePoint migration does not exist in the real world. Maybe for plain vanilla sites without any degree of customization, but these sites are few and far between. There is no “easy” button for migration.

Migrations are not the goal, but proper planning and change management policies will help you to be successful with your current and future migrations. The goals should be a stable environment, relevant metadata, discoverable content, and happy end users.

Introducing echo for SharePoint

echo for SharePoint is a dynamic tool that allows administrators and developers to quickly and easily migrate, replicate, and manage change across multiple sites, site collections, and farms. It manages migrations from WSS 2.0, 3.0, SPS2003 and MOSS 2007 to your 2007 environment by provisioning your new site and metadata taxonomy, importing content to the new structure from existing sites or file shares, and deploying design, workflow and web parts. echo is a series of wizards that replicate changes made via the user interface. Modify once, and deploy. Point it at a source site in one location (a template) and “echo” your taxonomy, site design, permissions, look and feel, and content changes between dev, test, and production environments. echo is extremely useful to anyone looking for help with change management of their SharePoint portal.

If SharePoint is a productivity tool for users, echo is the productivity tool for administrators.



echo for SharePoint Benefits

- Fast, safe portal changes by allowing administrators to test fast and often across dev, test and production environments
- Save time, repeat and automate SharePoint management by executing quick, simple tasks, or utilizing detailed, granular sequences (batch of tasks) that can be saved, edited, and executed as needed
- Flexibility through dynamic pilots, shorter design, faster deployments by allowing administrators to be iterative, migrating or deploying in waves
- Lowers risk by emphasizing testing, using best practices, and by providing a solid change management platform
- Longer portal shelf life through better management of metadata and taxonomy, improving the search experience
- Higher user adoption rates and overall satisfaction by making your environment and content easier to discover, navigate, and use

“At the moment, the single most valuable tool you need to know about is echo for SharePoint. A must-have for SharePoint administrators and developers.”

Mike Fitzmaurice,
former Senior SharePoint Product Manager, Microsoft.

“With echo, it takes me no more than a couple of minutes to apply changes. An incredible increase in productivity and an excellent ROI. And that's only the start.”

Nick Porter, Broadcast Australia

Since 2005, echoTechnology has provided powerful and flexible solutions for SharePoint. As one of the earliest SharePoint ISVs, echoTechnology has helped administrators and developers to manage some of the world's largest and most complex SharePoint deployments, but is easy and nimble enough to handle your ongoing, day-to-day SharePoint configuration and content management needs.



Corporate Headquarters, Axceler

600 Unicorn Park Drive
Woburn, MA 01801
Main: +1 866.499.7092

Seattle Office, echoTechnology

520 Pike Street, Suite 1405
Seattle, WA 98101
Main: +1 206.357.9443
Support: +1 206.357.9405
sales@echotechnology.com
support@echotechnology.com

Europe, Axceler

7 Swallow Place
London W1B 2AG, England
Main: +44 0 207 850 0199
eusales@echotechnology.com



Capabilities and Features

echo for SharePoint is a suite of eight powerful managers that allows you to execute individual tasks, or to build a complex sequence of tasks and save as a batch so that you can deploy, test, execute, and repeat actions as needed.

With echo, administrators and developers are able to:

- Batch, schedule, and automate management of content and configuration changes between your development, testing, and production environments
- Improve extranet provisioning, and the piloting of new sites and site collections
- Provide filtering, version cleanup, user permission and content type mapping. Merge content from multiple sites into a single site, or split from single site to multiple
- Simplify content loading from other farms or file shares, delegate version cleanup and metadata management to end users online or offline using Excel
- Migrate and manage content from WSS 2.0 and 3.0, SharePoint Portal Server 2001 and 2003, and Microsoft Office SharePoint Server 2007, and move documents from Lotus Notes
- Move complex folder structures, custom and historic metadata, and permissions from file shares or between SharePoint environments
- Deploy, update, or remove out-of-the-box, custom, or third party web parts
- Create, update, or remove sites and site collections, including look and feel, administrative settings, and permissions. Use out-of-the-box templates or replicate custom sites
- Promote or demote sites and site collections. Point new site collections to specific content databases
- Deploy, update, or reset master pages, using standard, publishing, and My Sites. Publish and approve designs and themes
- Activate and deactivate features at the site and site collection level
- Provides reporting around sites and site collections, document libraries, and other lists, as well as permissions by user and by location

System Requirements

- Available for 32 and 64 bit
- Supports Windows Server 2003 and 2008
- echo for SharePoint is a server based rich client and needs to be installed on the front end server
- You must have administrative privileges on the installation server